



Home Pro / Home Pro Elite / Home Pro Elite Arcade Style

Assembly Instructions

Thank you for purchasing a Gold Standard Games product. All of us at Gold Standard Games want you to be completely satisfied with your Home Pro Air Hockey game, so feel free to contact us for help with the assembly of your product, Gold Standard Games parts, or other information you may require.

Tools Required:

- 1/2" Wrench or Socket
- Phillips Head Screw Driver
- Level

Step #1

- Lift air hockey table out of the box and flip it upside down on a carpeted or smooth surface.
- Remove and open both the leg box and the accessory box.

Contents

Air Hockey Cabinet
Legs & Mounting Hardware

HOME PRO

Model # MGS-LB-WW1 /MSG-LB-WW1-NG

	<u>Part Number</u>	<u>Quantity</u>
Leg Assembly (Universal)	MS-LEG-0	4
5 ½ " x 5/16" Carriage Bolt	301-0002-0	16
5/16" Hex Nut	302-0002-0	16
5/16" USS Flat Washer	303-0002-0	16

HOME PRO ELITE / HOME PRO ELITE ARCADE STYLE

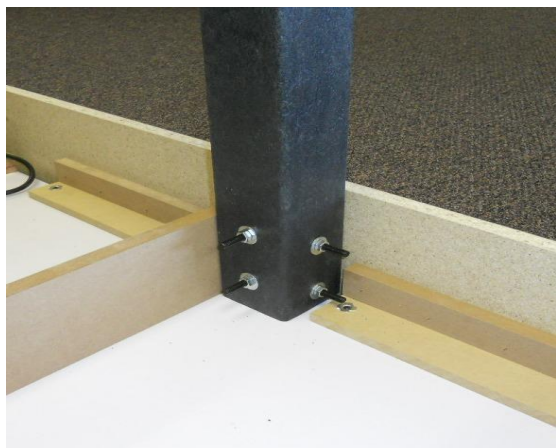
Model # KGS-LB-EW1/KGS-LB-EW1-NG/KGS-LB-EW2

Leg Assembly (Left)	AS-SSL-0	2
Right Assembly (Right)	AS-SSR-0	2
5/16" Hex Nut	302-0002-0	8
5/16 USS Flat Washer	303-0002-0	8
Blower Motor	210-0112-0	1
Gasket – For Blower Motor	203-0038-0	1
¼ -20x1" Hex Head Bolt	301-0009-0	3
¼" AE Flat Washer	303-0004-0	3
¼" Split Lock Washer	303-0007-0	3
Electronic Scoring Unit	401-0023-0	1
8/32 x ½" Phillips Pan Head Screw	301-0021-0	2
#8 SAE Flat Washer	303-0015-0	2
Power Supply Adapter	401-0024-0	1
Nylon Cable Tie	205-0968-0	8
3-3/16" Red Nylon Puck	201-0093-0	2
Mallet	201-0293-0	2
Sand Disk 6" x 180 Grit	210-0351-0	1
Assembly Instructions		

Step # 2 – Attach the Legs

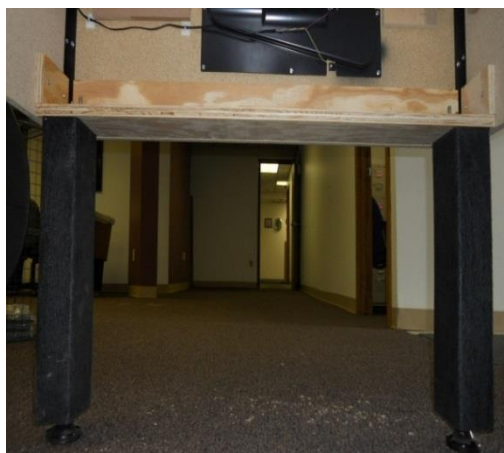
(Model # MGS-LB-WW1)

Attach the legs using the enclosed carriage bolts, washers and nuts as seen below with a ½” wrench or socket. For each leg attach two carriage bolts through the outside of the side apron and two through the inside support frame. Tighten until bolt heads are snug with the table surface. Over tightening could damage the side walls



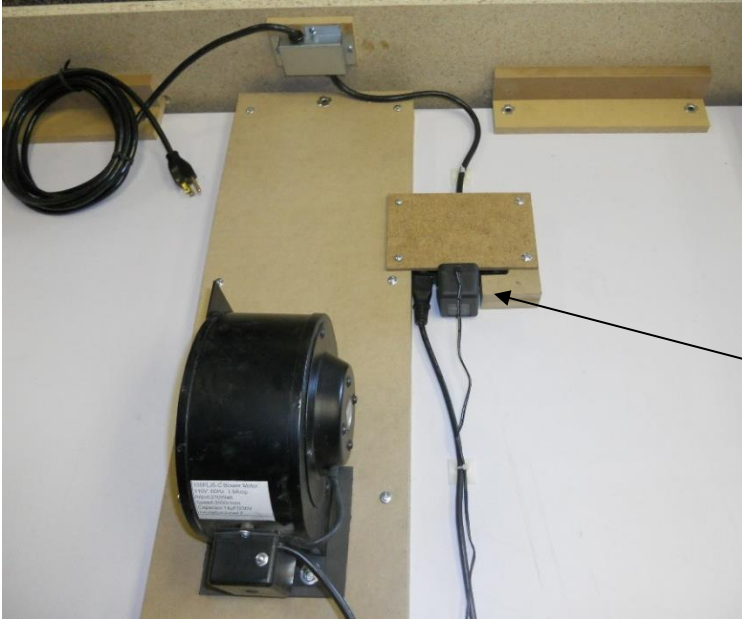
(Model # KGS-LB-EW1 / KGS-LB-EW2)

(Note that the wide side of each leg should face the longest side of the table) Place Legs marked (A) in position marked (A) and Legs marked (B) in position marked (B) then insert each leg's threaded studs into and through the mounting pad holes. Then secure with a flat washer/split-lock washer/hex nut (as shown).



Step # 3 – Attach the Blower Motor

Locate the blower motor, gasket, and (3) mounting bolts. Place the gasket in between the blower and the table surface. Line up the holes of the blower with the predrilled holes and tighten.



The plug from the blower motor and the AC Adapter should be plugged into the power strip mounted on the underside of the table. Use the wire ties to help secure the cables to the bottom of the table.

Step # 4 – Level the Table

Flip the table over and place in desired location. Level the air hockey game by placing a level across, lengthwise and diagonally into the four corners and raise or lower the appropriate leg leveler. Or the table can be leveled by turning the air on and placing the puck in the center of the table. If it consistently floats to one side or the other, adjust the leg levelers until the puck stays mainly in the center of the table.



Leg Leveler

Step # 5 – Plug in Power Strip

The plug from the power cord should then be plugged into a standard 110/120 volt wall socket. Turn on and off using the power switch located on the side of the table.

Step # 6 – Attach the Electronic Scoring Unit

Thread the two wires from the infrared sensors through the large hole on the side top- rail. The AC adapter should plug in to the power strip attached to the bottom of the table. Thread the smaller end through the same hole as other wires. Plug all three wires into the scoring unit as shown. If scored goals credit the wrong player, simply switch the two identical wires as they were plugged into the wrong position.

Scoring Wires

Line up the holes of the scoring unit with the smaller holes on the side rail. Fasten with a bolt in each hole with a Philips head screw driver.



Step # 7 – Operating the Scoring Unit

Turn the power switch to “on”. Select desired game options. By default, it begins with the 15 minute game option. To change the game option, push the “select” button. There are seven total options including “Free Play” which has no time limit or scoring limit. After choosing a game option, push “Start” button to begin. To start over press the “Reset/Start” button again. The volume switch has three settings: High, Low and Off.



Graphics/Labels:

The graphics on the side of the table are designed to be easily removed by the consumer if you prefer the table without them. Simply peel off the adhesive labels and remove.

Maintenance:

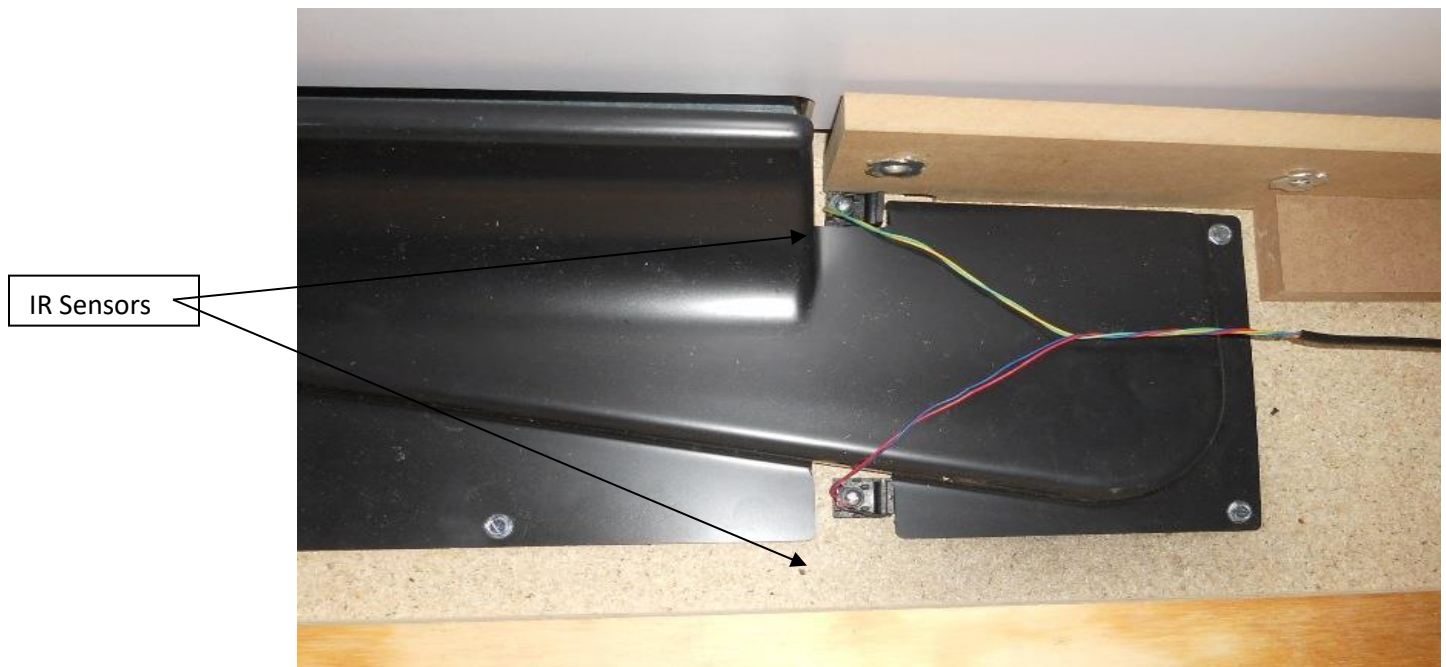
The table surface should be Cleaned using rubbing alcohol or a window cleaner. Be sure to have blower running to help keep air holes clear while cleaning. Do not use wax base cleaners as they will clog up the holes.

Do not clean the rails where the puck hits because this will cause the puck to not bank properly.

If the puck gets nicked, slows down, or stops floating, sand the puck lightly using fine to extra fine sandpaper (150 to 240 grit).

Trouble Shooting:

If the puck does not score properly on either end of the game, check to make sure that the IR Sensors are pointing directly at each other.



For complete rules, tips, and information on ranking, rating, tournaments and more, go to www.goldstandardairhockey.com

 GOLD STANDARD GAMES

Shelti™

3020 N Water Street

Bay City, MI 48708

Phone: 989 893-1739

Fax: 989 893-1809

www.gold-standard-games.com

info@gold-standard-games.com